

Service description

Product:
VM420Service description No.:
4120-S019Ver:
2

Symptom

Rubber mat between processor and conveyor is worn out.

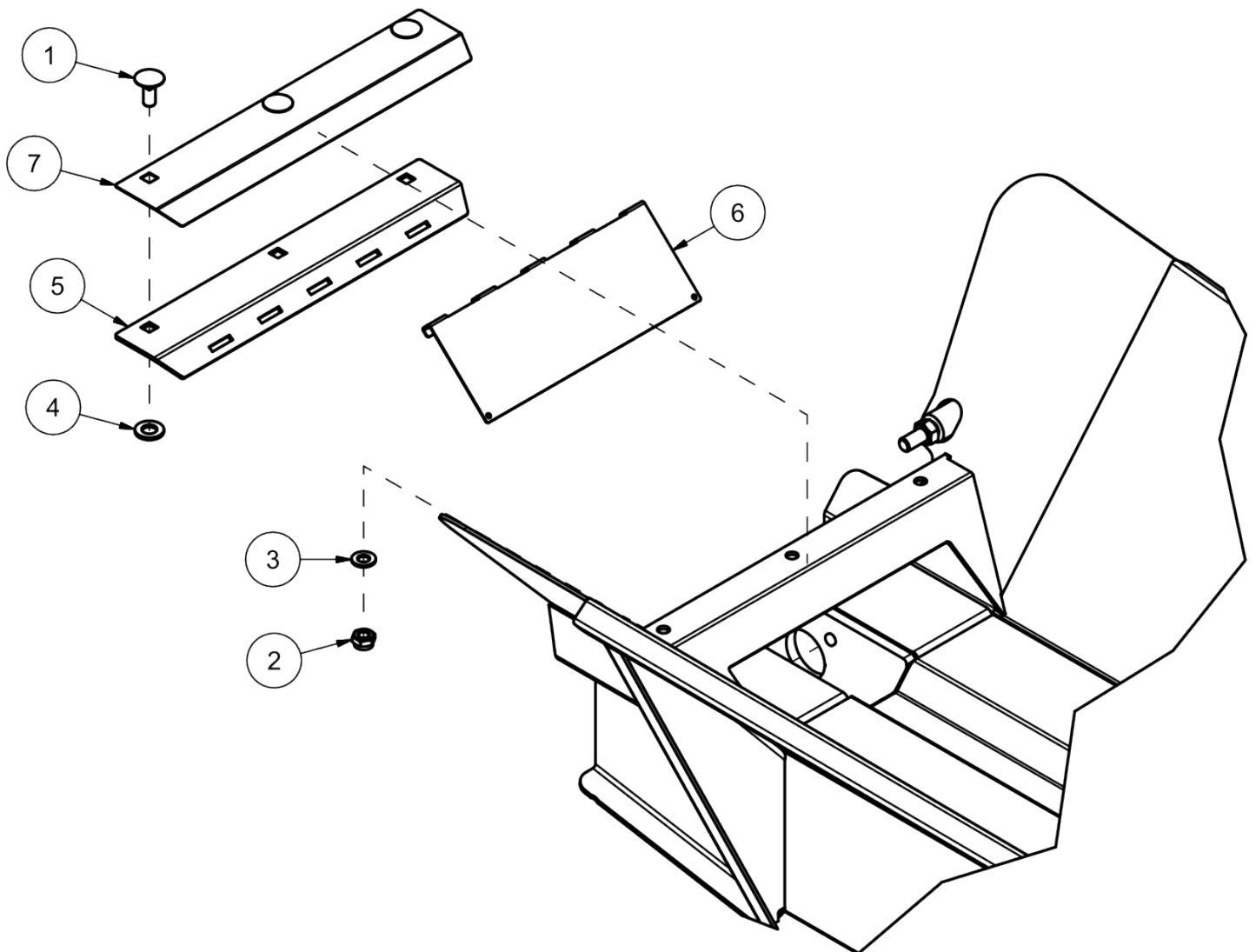
Cause

Long wood pieces combined with a steep loading angle for the conveyor results in big strain for the rubber mat here.

- Valid for serial from No. 09001 to and including No. 09046

Solution

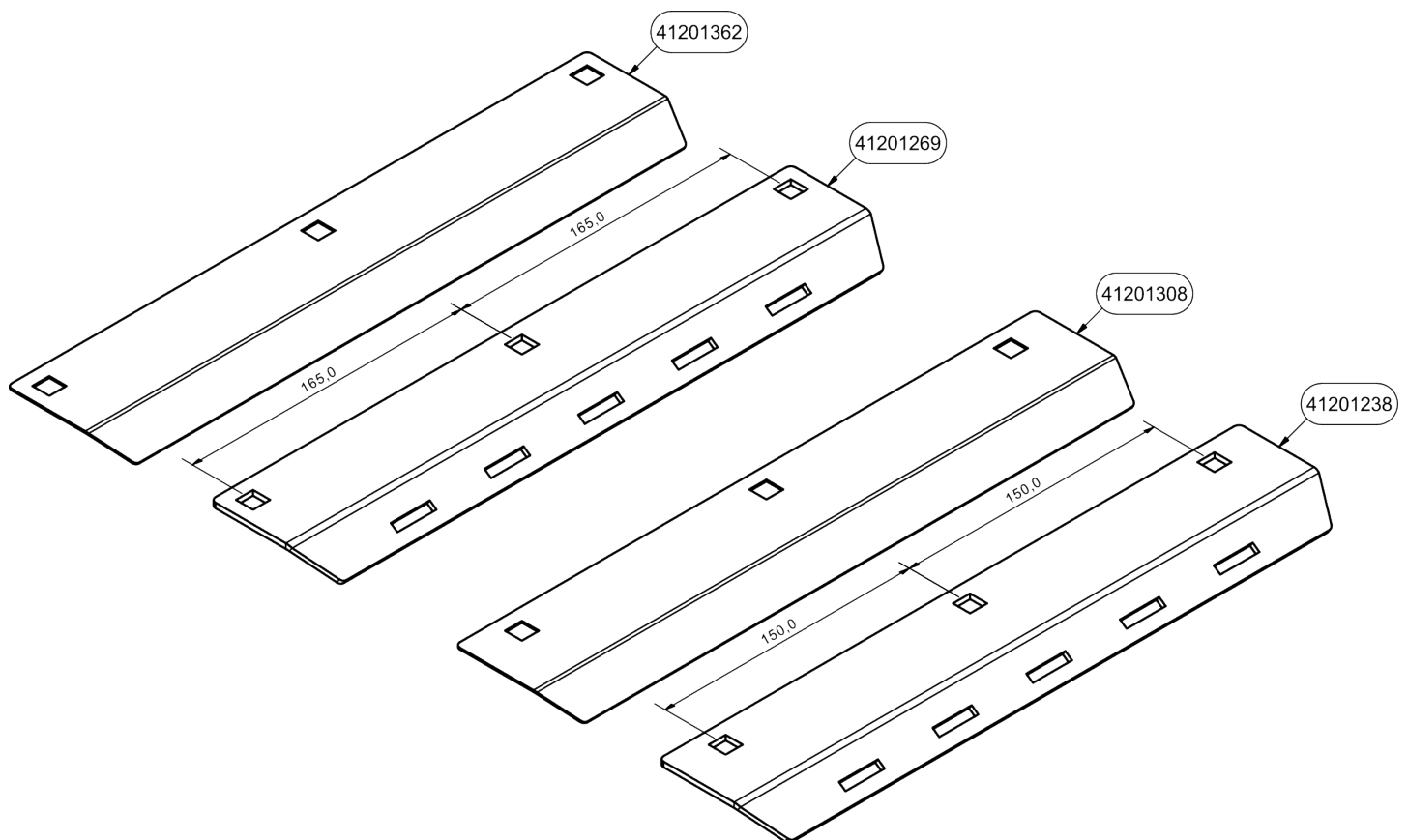
Assemble an improved solution, that is a lid made from steel.



Pos.	Ant.	Tegningsnr.	Artikkel nr	Beskrivelse	Kommentar
1	3		2344330	Låseskrue M10x25 EIZn 8.8 DIN 603	
2	3		2483610	Lockingmutter M10 EIZn DIN 985	
3	3		2531060	Underlagsskive M10 EIZn DIN 125	
4	3		2531069	Underlagsskive M12 EIZn DIN 125	
5	1	41201238	14120238	Låseplate	f.o.m. 09046
5	1	41201269	14120269	Låseplate	t.o.m. 09045
6	1	41201239	14120239	Medbringerluke	
7	1	41201308	14120308	Dekkplate	f.o.m. 09046
7	1	41201362	14120362	Dekkplate	t.o.m. 09045

Description

- Dismount sheet metal part pos. No.5 as well as the rubber mat,
- Assemble modified parts as illustrated pake 1
 - Washer pos 4 should be placed between locking sheet metal No.5 and processor body



Kommentar

- Sheet metal pos 5 has two version
 - Item No. 14120238 suits VM420 serial No. from and including. 09046
 - Item No. 14120269 suits VM420 serial No. to and including. 09045
- Cover sheet metal part pos 7 has two version
 - Item No. 14120308 suits VM420 serial No. from and including 09046
 - Item No. 14120362 suits VM420 serial No. to and including 09045